

**KEEP YOUR EARTHMOVING  
MACHINERY MOVING**



**HEMS LTD**

**Heavy Equipment  
Maintenance Solutions**

[sales@hemsltd.com](mailto:sales@hemsltd.com)

+44 2380 987 182

[www.hemsltd.com](http://www.hemsltd.com)

**HEMS is a specialist company for supplying the latest equipment for the servicing and maintenance of heavy machinery. Used in Construction, Mining, Agriculture, Marine, Oil and Gas industries worldwide.**

**Committed to innovation and operator health and safety at the centre of every design.**



**Heavy Equipment Maintenance Solutions (HEMS) Ltd.**

21 Monks Brook Industrial Estate, School Close, Chandlers Ford, Eastleigh,  
SO53 4RA

[sales@hemsltd.com](mailto:sales@hemsltd.com) [www.hemsltd.com](http://www.hemsltd.com) +44 2380 987 182

# MASTER PIN PUSHER

**Portable track presses that are part of the HEPP series.**

**They make it possible to assemble and disassemble:**

- chain sections
- driving wheels
- pulleys and rollers
- gears
- bearings
- shafts

**This can all be done in workshop or on site with this tool. HEMS offer various size options from 30 - 300 Tons (depending on make/model of the tracks and applications.**

**HEMS also offer specialised packages of designed Master Pin Pushers specifically for numerous OEMs.**

**For consultation and further information, contact [sales@hemsltd.com](mailto:sales@hemsltd.com)**



## **Advantages:**

- **Safe and effective removal/installation of Track and Master Pins and Bushings**
- **Reduction in labour hours**
- **Cost effective**
- **Eliminates old dangerous methods**



**Heavy Equipment Maintenance Solutions (HEMS) Ltd.**

21 Monks Brook Industrial Estate, School Close, Chandlers Ford, Eastleigh,  
SO53 4RA

[sales@hemsltd.com](mailto:sales@hemsltd.com) [www.hemsltd.com](http://www.hemsltd.com) +44 2380 987 182





**HEMS LTD**  
HEAVY EQUIPMENT MAINTENANCE SOLUTIONS

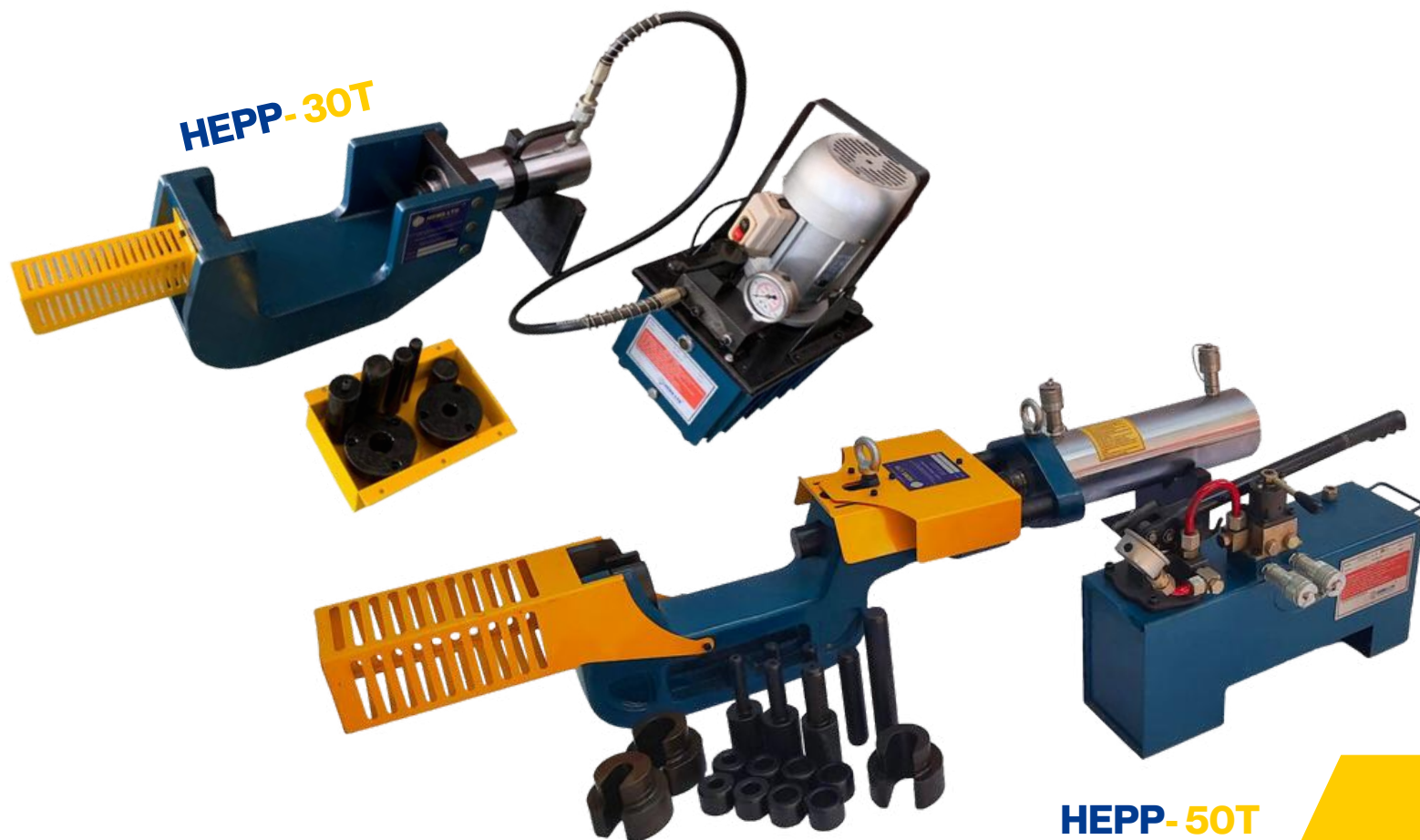
**KEEP YOUR EARTHMOVING  
MACHINERY MOVING**

# HEPP-30T

# HEPP-50T

	HEPP-30T	
Model	Manual (HEPP-30M)	Electric (HEPP-30E)
Capacity	30ton	
Stroke	200mm	
Working Pressure	700kg/cm <sup>2</sup>	
Weight (Approx)	28.5kg	
Operation	Hand Pump	Electric Pump
Universal Tooling set (included in the package)	5 Sets to cover 18mm - 36.2mm in diameter	
Minimum Pin Diameter	18mm	
Maximum Pin Diameter	36.2mm	
Minimum Pin Length	90mm	
Maximum Pin Length	170mm	

	HEPP-50T	
Model	Manual (HEPP-50M)	Electric (HEPP-50E)
Capacity	50ton	
Stroke	250mm	
Working Pressure	700kg/cm <sup>2</sup>	
Weight (Approx)	85kg	
Operation	Hand Pump	Electric Pump (dual control pump 2in1)
Universal Tooling set (included in the package)	4 sets to cover from 19.3mm - 36.3mm in diameter	
Minimum Pin Diameter	19.3mm	
Maximum Pin Diameter	36.3mm	
Minimum Pin Length	133mm	
Maximum Pin Length	178mm	



**Heavy Equipment Maintenance Solutions (HEMS) Ltd.**

sales@hemsltd.com    www.hemsltd.com    +44 2380 987 182

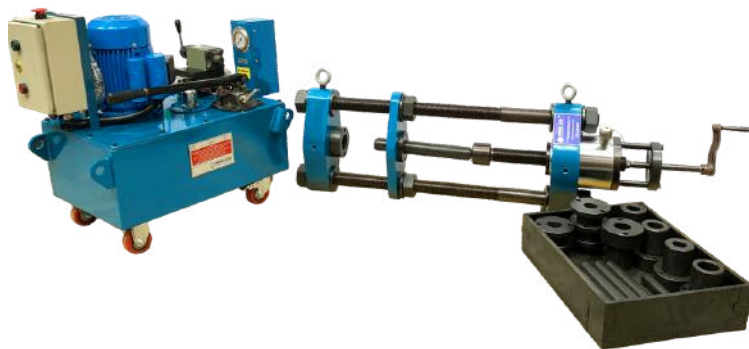


**HEMS LTD**  
HEAVY EQUIPMENT MAINTENANCE SOLUTIONS

**KEEP YOUR EARTHMOVING  
MACHINERY MOVING**

# HEPP-65T

	HEPP-65T	
Model	Manual (HEPP-65M)	Electric (HEPP-65E)
Capacity	65ton	
Stroke	60mm	
Working Pressure	700kg/cm2	
Weight (Approx)	130kg	
Operation	Hand Pump	Electric Pump (dual control pump 2in1)
Universal Tooling set (included in the package)	6 sets to cover from 30.1mm - 52.3mm in diameter	
Minimum Pin Diameter	30.1mm	
Maximum Pin Diameter	52.3mm	



# HEPP-100T

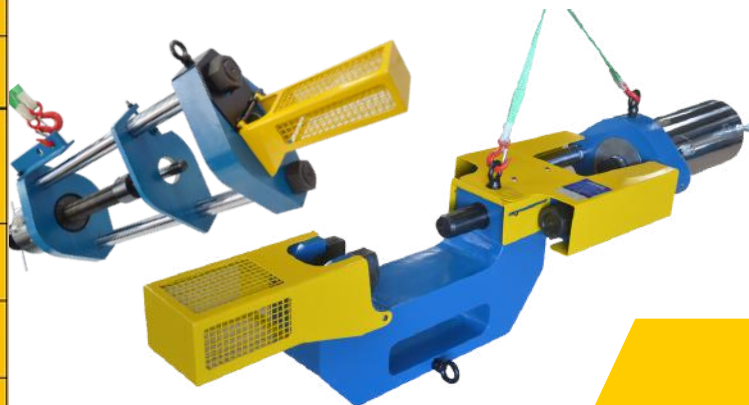


	HEPP-100T	
Model	Manual (HEPP-100M)	Electric (HEPP-100E)
Capacity	100ton	
Stroke	350mm	
Working Pressure	650kg/cm2	
Weight (Approx)	205kg	
Operation	Hand Pump	Electric Pump (dual control pump 2in1)
Universal Tooling set (included in the package)	10 sets to cover from 19.3mm - 60.2mm in diameter	
Minimum Pin Diameter	19.3mm	
Maximum Pin Diameter	60.2mm	
Minimum Pin Length	160mm	
Maximum Pin Length	320mm	

	HEPP-150T	
Model	Manual (HEPP-150M)	Electric (HEPP-150E)
Capacity	150ton	
Stroke	350mm	
Working Pressure	650kg/cm2	
Weight (Approx)	480kg	
Operation	Hand Pump	Electric Pump (dual control pump 2in1)
Universal Tooling set (included in the package)	12 sets to cover from 23.7mm - 70mm in diameter	
Minimum Pin Diameter	23.7mm	
Maximum Pin Diameter	70mm	
Minimum Pin Length	311mm	
Maximum Pin Length	365mm	

# HEPP-150T

**150 T Available in 2 Frame Designs!**



**Heavy Equipment Maintenance Solutions (HEMS) Ltd.**

sales@hemsltd.com    www.hemsltd.com    +44 2380 987 182

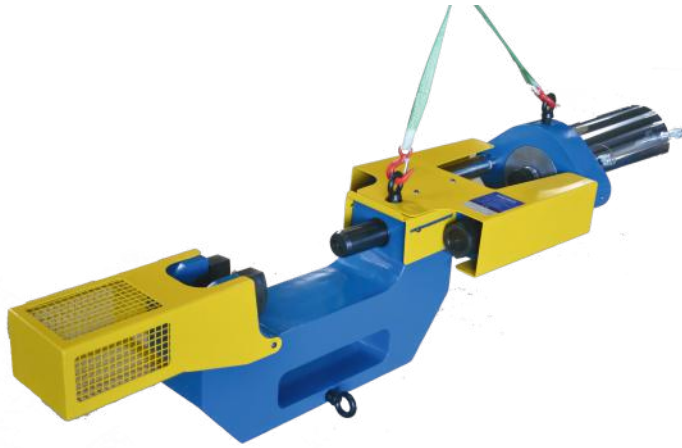




**HEMS LTD**  
HEAVY EQUIPMENT MAINTENANCE SOLUTIONS

**KEEP YOUR EARTHMOVING  
MACHINERY MOVING**

# HEPP-200T



	HEPP-200T	
	Manual (HEPP-200M)	Electric (HEPP-200E)
Model	200ton	
Capacity	350mm	
Stroke	650kg/cm2	
Working Pressure	630kg	
Weight (Approx)	Hand Pump	
Operation	Electric Pump (dual control pump 2in1)	
Universal Tooling set (included in the package)	15 sets to cover from 19.3mm - 76.2mm in diameter	
Minimum Pin Diameter	19.3mm	
Maximum Pin Diameter	76.2mm	
Minimum Pin Length	311mm	
Maximum Pin Length	415mm	

# HEPP-230T, 250T, 300T. 400T

Model No.	Capacity (ton)	Stroke (mm)	Working Pressure (kg/cm2)	Approx Weight (kg)	Operation	Universal Tooling Set (included in the package)	Pin Details			
							Diameter (mm)	Max Diameter (mm)	Min Length (mm)	Max Length (mm)
HEPP-230	230	350	650	680	Electric Pump	7 sets to cover 22mm - 85mm in diameter	22	85	360	425
HEPP-250	250	350	650	810	Electric Pump	7 sets to cover 22mm - 85mm in diameter	22	85	360	425
HEPP-300	300	600	664	1420	Electric Pump	15 sets to cover 36.4mm - 85mm in diameter	36.4	85	360	425
HEPP-400	400	500	660	1480	Electric Pump	15 sets to cover 60mm - 105.2mm in diameter	60	105.2	400	400



**Heavy Equipment Maintenance Solutions (HEMS) Ltd.**

sales@hemsltd.com    www.hemsltd.com    +44 2380 987 182



**HEMS LTD**  
HEAVY EQUIPMENT MAINTENANCE SOLUTIONS

**KEEP YOUR EARTHMOVING  
MACHINERY MOVING**

# Additional Attachments

Below items are included in our Master Pin Pusher packages  
(excluding the 30T and 65T)



**20 Flat Jack with Spacer  
for bushing removal**



**Chain Pulley**



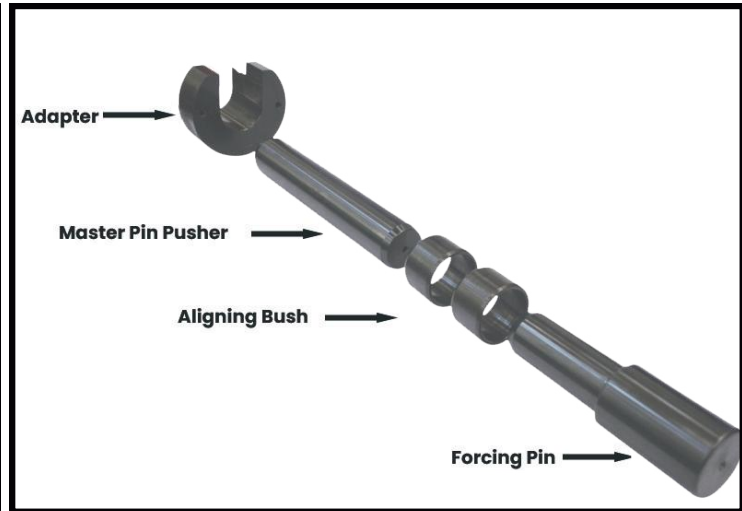
**Spare Directional Control Valve (1 Nos)**



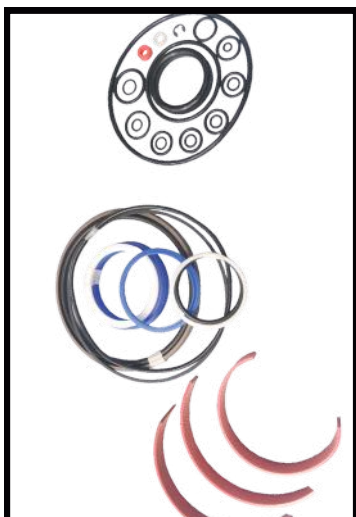
**Hand Tools (1 set of  
Spanners and Allen Keys)**



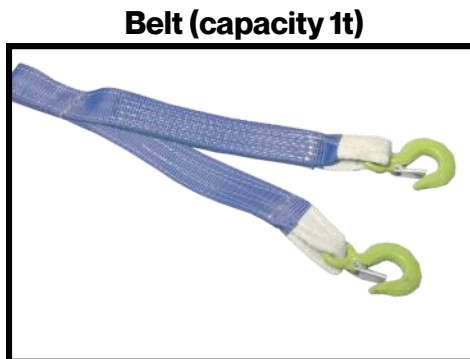
**Telescopic Tripod  
(capacity 1t)**



**Rubberised hose for flexibility. (4 metres long 2  
nos) Quick disconnect couplers (4 nos)**



**Spare  
seal kit  
for  
cylinder  
and  
pumping  
unit (1  
set)**



**Belt (capacity 1t)**



**Heavy Equipment Maintenance Solutions (HEMS) Ltd.**

sales@hemsltd.com    www.hemsltd.com    +44 2380 987 182





# Pin Puller

Single acting return hydraulic jacks are available in both alloy steel and aluminium. They have a 50 and 100mm stroke.



	Pin Puller			
Model	HE PP 30/50	HE PP 100	HE PP 150	HE PP 200
Stroke (mm)	50/100	100	100	100
Closed Height (mm)	245/255	295	325	350
Outer Diameter (mm)	115/150	215	245	290
Bore Diameter (mm)	95/135	180	200	220
Ram Diameter (mm)	80/110	150	150	160
Centre Hole (mm)	33/42	77	80	80
Effective Area (sq/cm)	42.6/78.5	141.4	235.6	235.6
Max Diameter Pin	38mm for 30T, 55mm for 50T	90mm	140mm	185mm

Each pin and bush can be replaced in one or multiple strokes. Jacks are centre hole type and are placed on C-sleeves (one over the other) through which the centre rod passes through and the nuts are tightened at the ends.



Tie rods and nuts are machined from an alloy steel material, hardened, and tempered to increase strength and toughness.

The trolley is an optional accessory that enables the pin puller to have a precise and efficient operation.





**HEMS LTD**  
HEAVY EQUIPMENT MAINTENANCE SOLUTIONS

**KEEP YOUR EARTHMOVING  
MACHINERY MOVING**

# 65T Dual Action Press

## Combined Portable Pin Press & Puller

A portable hydraulic tool used for safe removal and fitting of pins and bushings. It can be used to press and pull both hydraulic and track pins. It can also do Master pins and bushings.



**HE-DAP 65T**

It has a unique combination of **2 reputable tools in 1 unit.**

This makes it an effective, compact, and portable solution. Our Dual Action Press can press pins up to 55mm and pull pins up to 62mm. It comes with an option of Manual Hand Pump or Dual Control.

65 T Dual Action Press									
						Tooling Sets (Included)		Pin Details	
Model No.	Capacity (ton)	Stroke (mm)	Working Pressure (kg/cm <sup>2</sup> )	Approx Weight (kg)	Operation	Pushing Pins	Pulling Pins	Min Diameter	Max Diameter
HE-DAP 65T E	65	60	700	200	Dual Control Pump	6 sets covering 30.1mm - 52.3mm	Tooling set to pull pins up to 62mm	30.1mm	52.3mm
HE-DAP 65T M					Manual Control Pump				

### Included in our Dual Action Press:

- Complete Tie-Rod Frame
- 65T Single Acting Cylinder
- Centre Rod
- 6 Sets of Master Pin Tooling
- Hoses
- Pulling Rod - M39 x 1000mm long
- 2 Sets of C-Sleeve - 160mm bore x 135mm long
- 5 Sets of Threaded Adaptors: M12, M16, M20, M24, M30
- Safety Guards
- Couplers with Aluminium Dust Caps
- Spare Seal Kit for Jack
- Spanner and Allen Key Set
- Split Nut



**Heavy Equipment Maintenance Solutions (HEMS) Ltd.**

sales@hemsltd.com    www.hemsltd.com    +44 2380 987 182





**HEMS LTD**  
HEAVY EQUIPMENT MAINTENANCE SOLUTIONS

**KEEP YOUR EARTHMOVING  
MACHINERY MOVING**

**PCRB-4000**

# Portable Cylinder Repair Kit

PCRB-4000	
Torque Capacity of Nut Buster	49,759N @350 bar
Single or Double Acting Cylinder	Double
Cylinder Sizes (Maximum)	
Diameter	200mm
Weight	1000kg
Extraction Cylinder Capability	10T
Specifications	
Stroke (mm)	1000
Extraction Cylinder Open Length (mm)	2000
Open Length with Extension Bar (mm)	3000
Max Floor Space	2.8 sq/m
Motor Power	3 HP
Nut Runner Torque	250Nm
Nut Runner Spanner Wrench Speed	14-100rpm
Built-in Spanner	Yes
Hydraulic System Pressure	350bar
This bench conforms with CE and UKCA standards.	

**A lightweight kit. It is NOT designed to be a heavy-duty stationary repair bench.**

**An affordable alternative to disassembly benches available on the market. The work station accommodates all required tooling and fixtures.**



**This whole unit can be placed in a small box (75"x 60"x 50").**

**The length of the cylinder extracting capacity is up to 1 metre and with extended forks, 3 metres long. Maximum barrel diameter that can be held up is 200m. The weight loading capacity is up to 1 ton.**

**The unit is built with a hydraulic hand operated directional control valve ratchet mechanism. This comes with a hydraulic power pack. It is extremely easier to move from once place to another.**



**Heavy Equipment Maintenance Solutions (HEMS) Ltd.**

sales@hemsltd.com    www.hemsltd.com    +44 2380 987 182



**HEMS LTD**  
HEAVY EQUIPMENT MAINTENANCE SOLUTIONS

**KEEP YOUR EARTHMOVING  
MACHINERY MOVING**

# Attachments (Included)



**Universal Wrench**

Universal Wrench is included to cater any shape of cylinder head. It can be mounted on the Nut Buster head or to either spanner plate.



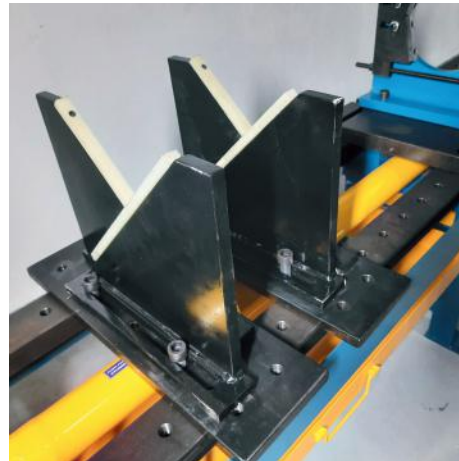
**Spanner Plates**

2 x Spanner Plates (90 and 95mm) allow you to clamp larger nuts.



**Clevis Lock**

Clevis Lock plates are supplied with mounting plates and M16 shaft and nuts to hold the cylinder. Cylinder can be secured from barrel end or rod eye



**Adjustable 'V' Chucks**

2 sets of 'V' Chucks are supplied with the bench to support the barrel and ram.



**Socket Drive**

1 inch square socket drive is included along with 10 x square drive hex sockets. Hex socket sizes: 36, 38, 41, 46, 50, 55, 60, 65, 75, or 80 mm.



**Mounting Plate Extension Bars**

Two bars can be fitted to the mounting plates for working on cylinders with less than 1,000mm stroke.

**Heavy Equipment Maintenance Solutions (HEMS) Ltd.**

sales@hemsltd.com    www.hemsltd.com    +44 2380 987 182





**HEMS LTD**  
HEAVY EQUIPMENT MAINTENANCE SOLUTIONS

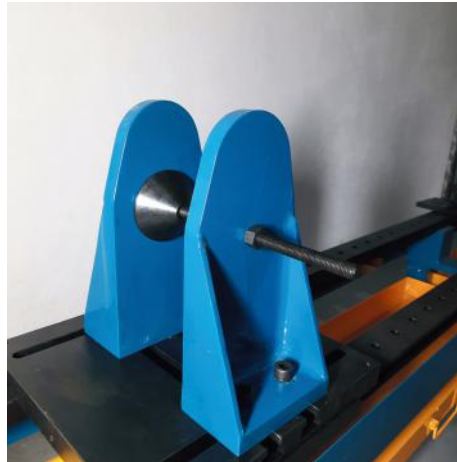
**KEEP YOUR EARTHMOVING  
MACHINERY MOVING**

# Attachments (Included)



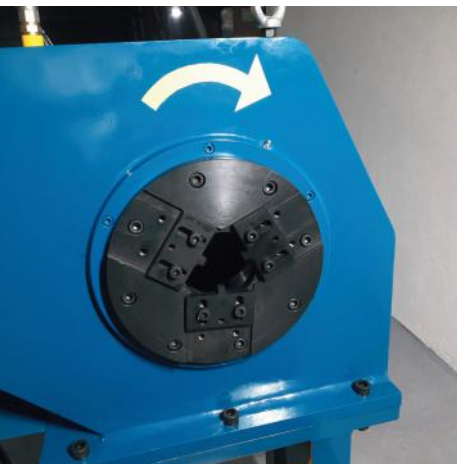
Spanner sets to unlock gland nuts are provided in 8, 10, and 12mm sizes. Also included are 5, 6, 8mm diameter ppis for heads with round holes.

**Gland Nut Spanner Sets**



Clevis Support with cones on sliding bed is provided to mount barrel or ram eye. M20 bolt with nuts are part of this unit.

**Clevis Support**



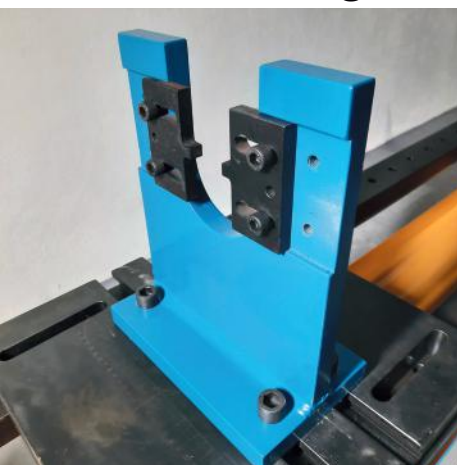
Also included is a 3-slot spanner, for odd cylinder heads with 3 or 6 holes in the gland

**3-Slot Mounting Plate**



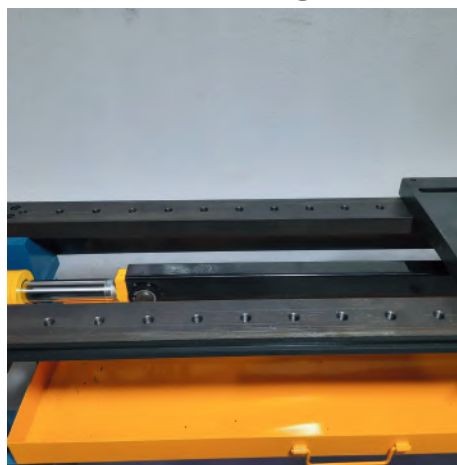
A spare bed mounting plate is supplied, enabling you to clamp clevis support or spanner plates for smaller cylinders.

**Bed-Mounting Plates**



Giant nut spanner sets can be mounted on either of the included spanner mounting plates. These plates are mounted to the sliding bed.

**Bed-Mounting Spanner Plates**



Cylinder Extension Bar helps you to pull apart larger cylinders which have a stroke of more than 1 metre.

**Cylinder Extension Bar**

**Heavy Equipment Maintenance Solutions (HEMS) Ltd.**

sales@hemsltd.com    www.hemsltd.com    +44 2380 987 182



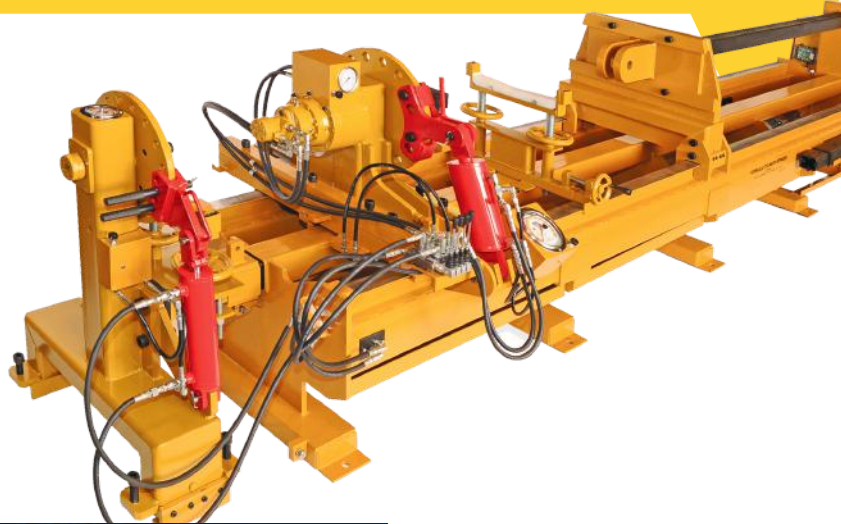
**HEMS LTD**  
HEAVY EQUIPMENT MAINTENANCE SOLUTIONS

**KEEP YOUR EARTHMOVING  
MACHINERY MOVING**

# Cylinder Repair Bench

All our static cylinder repair benches come complete with **accessories** required to begin repairs immediately.

Cylinders can be fully disassembled, repaired, and reassembled in **under an hour**.



	HEMS/TUXCO Cylinder Repair Bench					
Model	HCS-25-LS	HCS-2520	HCS-30	HCS-40	HCS-60	HCS-60-L
Torque Capacity (kg/m)	3457.5	3457.5	4149	5532	8298	8298
Acting Torquer	SINGLE	SINGLE	DOUBLE	DOUBLE	TWO DOUBLE	TWO DOUBLE
Max Cylinder Length (extended) (m)	5.8	7.9	5.8	7.9	7.3	10.4
Max Cylinder Diameter (mm)	406.4	558.8	406.4	558.8	508/762	
Max Floor Space	23'x3' with 9' of air space on one end	30'x3' with 10' of air space on one end	26'x3' with 9' of air space on one end	33'x3' with 9' of air space on one end	32'x5' with 11' of air space on one end	43'x5' with 12' of air space on one end
Power Required	Shop Air, 115/230V	Shop Air	All Voltage	All Voltage	All Voltage	All Voltage
Horse Power	N/A		5		7.5	
Nut Runner Torque	N/A		5,000lb/ft			
Nut Runner Speed Wrench	N/A		8rpm			
Built-in Spanner	Yes					
Access Required	Front/Rear		Front			
Torquer Stroke Speed	10' stroke, 29sec/ft		10' stroke, 14sec/ft	10' stroke, 13.5sec/ft	6/10' stroke, 10/14sec/ft	
Rod Extraction Installation Speed	48' stroke, 7.6 sec/ft	14' stroke, 33sec/ft	48' stroke, 5.2sec/ft		48' stroke, 4sec/ft	
Pendant Control	No		Yes			
Extraction Force (kN)	35.9	44.1	62.3		65.4	

## HEMS Hydraulic Cylinder Repair Features:

- Centre-line Mounting
- One-Man Operation
- Built-in Universal Spanner Wrench
- Built-in Power
- T-Slot Securing System
- Universal High Torque Wrench
- Adjustable Support Stands
- Reduced Downtime
- Versatile
- Easy Installation
- Quick Return on Investment



**Heavy Equipment Maintenance Solutions (HEMS) Ltd.**

sales@hemsltd.com    www.hemsltd.com    +44 2380 987 182





**HEMS LTD**  
HEAVY EQUIPMENT MAINTENANCE SOLUTIONS

**KEEP YOUR EARTHMOVING  
MACHINERY MOVING**



# Cylinder Tester

Having the certainty that there will be no rod or piston seal leaks and that the cylinder will work properly means greater profitability, more satisfied customers, and long-term loyalty.

A low cost insurance policy that proves to be a valuable addition to any hydraulic repair facility.

## Features:

- High Pressure Hoses with Quick Disconnects
- Hose Storage Rack
- Liquid-filled Test Gauges
- Quick Disconnect Adaptors
- Shop Air Adaptor for all removal post-testing
- Low Friction Castor Wheels

Cylinder Tester		
Model	HCT-300	HCT-500
Max Testing Pressure	3000psi (207 bar)	5000psi (345 bar)
Horsepower	7.5	15
Hydraulic Pump Capacity	20GPM (76LPM)	8.3GPM (32LPM)
Power Required	All Voltage 50/60Hz	
Reservoir Capacity	227 litres (60 gallons)	

# Barrel Washer

Dirt and honing debris are every hydraulic systems' worst nightmare. **HEMS' CBW-300** guarantees that cylinders will be **contaminant free** when they are reassembled and reinstalled in the field.

Uses **rotating pressure spray nozzles** and rotating brushes to make repaired cylinders factory clean. It uses a powerful **12 GPM diaphragm pump** and comes with 2 sets of brushed handle cylinders with 4 - 13.5 bores.

There is a splash guard to keep the work area clean and dry. There are **25 filter micron filter bags** that clean the solutions, returning it to the Washer tank for reuse.

A second filter stack will filter the solution down to 3 microns. Debris is trapped by the filter bags and disposed of with the dry waste. It's a system designed for maximum productivity and to help avoid OSHA and EPA violations.



**Heavy Equipment Maintenance Solutions (HEMS) Ltd.**

sales@hemsltd.com    www.hemsltd.com    +44 2380 987 182



**HEMS LTD**  
HEAVY EQUIPMENT MAINTENANCE SOLUTIONS

**KEEP YOUR EARTHMOVING  
MACHINERY MOVING**

# HE-ADCT

## Automatic Digital Cylinder Tester

Automatic Digital Cylinder Tester				
Circuit	High Pressure Axial Pump	Low Pressure Axial Pump	Oil Filtration	Pilot
Max Working Pressure	Up to 415 bar	100 bar	10 bar	100 bar
Oil Flow Rate	25 L/Min	60 L/Min	80 L/Min	80 L/Min



Automated digital cylinder testers manufactured in compliance with international ISO 10100:2020 standards.

You can wash the cylinders with clean oil and control the oil contamination level in compliance with ISO 4406. These machines also have semi-automatic and manual modes.

All tests can be programmed through an easy-to-use touch-screen system or using an industrial computer keyboard.

- Contamination Sensor: PARKED ICount PD
- Oil Tank Working Capacity = 650 litres
- Oil to use for testing = ISO VG 46 Hydraulic Oil



**Max Cylinder Weight = 15 q**  
**Max Cylinder Diameter = 600mm**

**Heavy Equipment Maintenance Solutions (HEMS) Ltd.**

sales@hemsltd.com www.hemsltd.com +44 2380 987 182





**HEMS LTD**  
HEAVY EQUIPMENT MAINTENANCE SOLUTIONS

**KEEP YOUR EARTHMOVING  
MACHINERY MOVING**

# HE-ADCT

## Automatic Digital Cylinder Tester



This product includes a hydraulic powerpack, a 400/650 litre tank capacity, an electric board, an operator's digital control panel and instrumentations. The unit is a completely enclosed structure. Only the hoses come out from the unit in order to connect to the cylinder. They are completely covered to ensure operator's safety.

**Automatic Digital Cylinder Tester**

Model	HE-ADCT-01	HE-ADCT-02
Tank Capacity	400 litre	650 litre
Max Testing Pressure	450 bar	415 bar
Cylinder Specification	5000mm extended length, 500mm diameter	10,000mm extended length, 600mm diameter
Weight	1,200kg (empty)	2,000kg (empty)
Max Cylinder Weight	600kg	15 q
Pneumatic Feeding System Pressure	6/9 bar	8/10 bar
Min/Max		
Internal Tank Capacity	200 litres	500 litres
Max Fluid Temperature	50 degrees	



The test data and results are stored on the computer system. After each test, it is also possible to print the test report or upload programs and data onto a USB memory unit.

- Supply Voltage = 3-Phase 380 V, 50Hz
- Operator Control Unit with 10" Touch Screen

**Heavy Equipment Maintenance Solutions (HEMS) Ltd.**

sales@hemsltd.com    www.hemsltd.com    +44 2380 987 182





**HEMS LTD**  
HEAVY EQUIPMENT MAINTENANCE SOLUTIONS

**KEEP YOUR EARTHMOVING  
MACHINERY MOVING**

# HE-PHT-415

## Portable Hydraulic Cylinder Tester

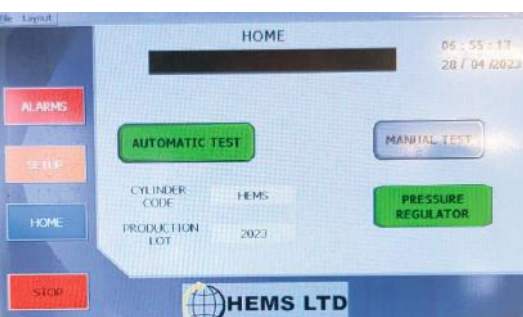
The unit is **mobile**, meaning that you can bring the tester to the cylinder. This enables easy access in the workshop environment.



It is controlled by a **touch-screen display**. You can save test reports digitally via **USB**.

Portable Hydraulic Cylinder Tester	
Electrical Systems	
Voltage	400V 3-Phase
Frequency	50Hz
Electrical Power	5kW
Pneumatic Feeding Systems	
Max Pressure	8 bar
Flow Rate	180 L/Min
Air Multiplier 4x Pressure Max	32 bar
Electric Motor	
Low and High Pressure System	3-Phase Asynchronous, 5kW
Hydraulic Plant	
Internal Tank Capacity	450 litres
Max Fluid Temperature	50 degrees
Max Flow	20 L/Min
Max Pressure	415 bar (6000psi)
Fluids Allowed	Oil ISO VG 32/46

At the end of the test, a test report is issued, providing you with a detailed understanding of your cylinder. It can perform both **automatic and manual testing cycles**. These parameters can be set from the panel via a touchscreen monitor. The **maximum operating pressure is also adjustable** and is done from the panel.



**Heavy Equipment Maintenance Solutions (HEMS) Ltd.**

sales@hemsltd.com    www.hemsltd.com    +44 2380 987 182





# Oil Filtration Units

## HE-MF Range

Oil Filtration systems used for **Superfine Stage Filtration** (fine solid particle removal) of lubricating and hydraulic oils.

**Independently operating by-pass oil purifying machines.**

### Features:

- **Multi-stage filtration for faster and more economical filtration**
- **Automatic control panel with protections**
- **High Beta Ratio - Filtration efficiency of 99.998%**
- **Ability to remove free, emulsified, and dissolved moisture.**
- **Efficient vacuum unit for dehydration**
- **Contaminant cleanliness level = NAS 4-5**



Oil Filtration Units	
HE-MF-15	
Pump Flow	Gear Type Mono Block Pump, 30 L/Min
Max Operating Pressure	0 - 15 bar
Hoses	Flexible Hoses 3m long suction and outlet
Viscosity	Hydraulic & Lube Oil (up to 100 cSt)
Working Temperature	0 - 40 degrees
Particle Analyser	Portable Particle Counter (to be ordered separately)
HE-MF-20	
Pump Flow	Gear Pump, 40 L/Min
Max Operating Pressure	10 bar
Inlet Filter	149 Micron (SS Mesh Type) washable filter
Particle Analyser	Portable Particle Counter (to be ordered separately)



**HEMS LTD**  
HEAVY EQUIPMENT MAINTENANCE SOLUTIONS

**KEEP YOUR EARTHMOVING  
MACHINERY MOVING**

# Oil Filtration Units

## HE-MF-40

### Oil Filtration Units

#### HE-MF-40

##### Overall Dimensions

Height	1430mm
Width	785mm
Depth	830mm
Weight	150kg

##### Electrical System Features

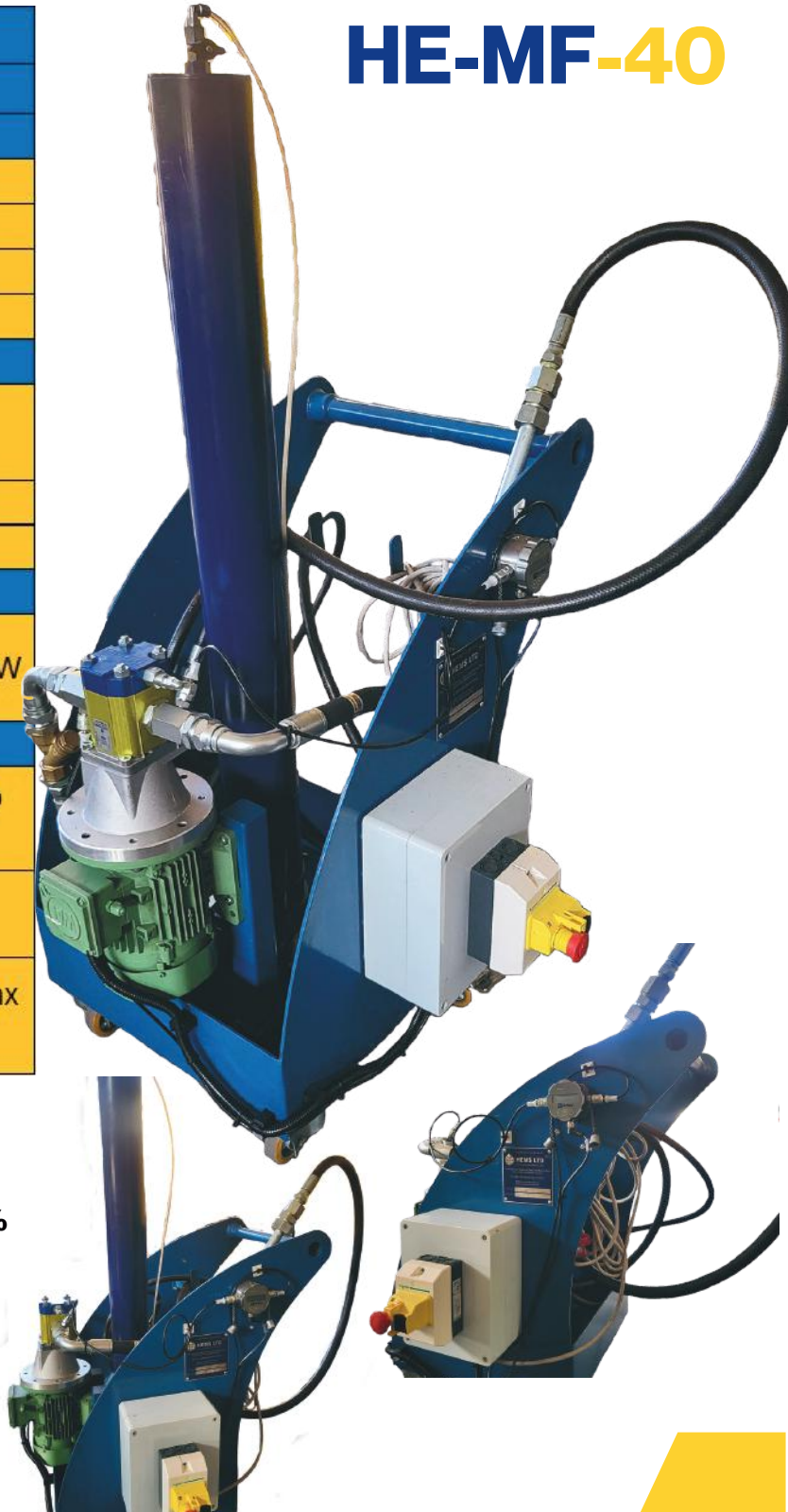
Max. Power Consumption	1.1kW
Tension	380 V Trifase
Hz	50

##### Electric Motorisation

Motor Circuit	3-Phase asynchronous 1.1kW
---------------	----------------------------

##### Hydraulic System

Permitted Fluids	Hydraulic Oils according to DIN 51524
Max. Fluid Temperature	65 degrees
Test Circuit	Max Flow Rate: 40 L/Min, Max Pressure: 10 bar



### Benefits of using HEMS Oil Filtration Units:

- Reduce spare parts consumption by up to 60%
- Double the lifetime between major overhauls
- Reduce the chance of unplanned repairs and maintenance
- Extends machinery lifespan
- Reduces fluid disposal costs
- Increases productive use of equipment

**Heavy Equipment Maintenance Solutions (HEMS) Ltd.**

sales@hemsltd.com    www.hemsltd.com    +44 2380 987 182





**HEMS LTD**  
HEAVY EQUIPMENT MAINTENANCE SOLUTIONS

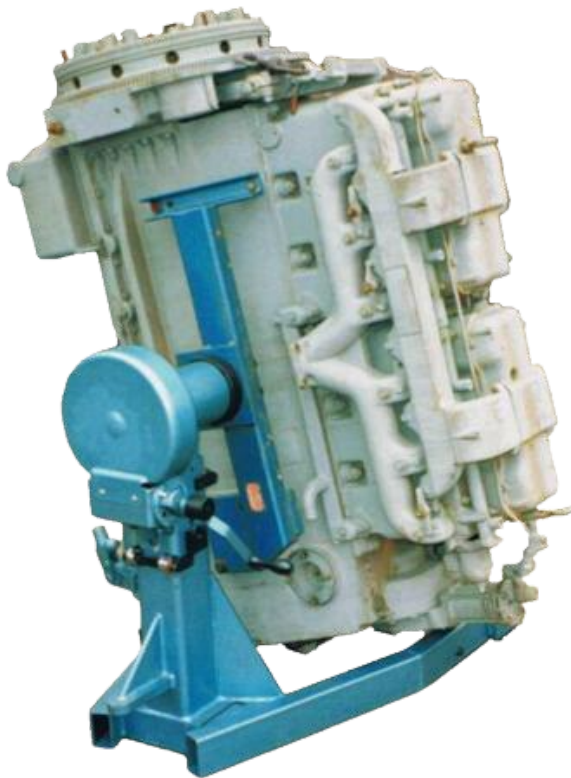
**KEEP YOUR EARTHMOVING  
MACHINERY MOVING**

# Engine Stands

**HEMS supply specialised engine rotating stand packages including all the necessary adaptor plates for all engine and transmission makes that are on the market.**

**Increased manoeuvrability can save up to 50% in labour hours.**

**Reduces workplace injuries by eliminating non-productive handling procedures.**



	<b>HM-ES-1050</b>	
	<b>Suitable for Smaller Applications</b>	
	<b>Floor Mounted</b>	<b>Mobile</b>
<b>Capacity</b>	760kg	
<b>Spindle Height</b>	876mm	889mm
<b>Height</b>	1050mm	
<b>Width</b>	460mm	710mm
<b>Length</b>	870mm	1170mm
<b>Net Weight</b>	102kg	110kg

	<b>HM-ES-1076</b>	
	<b>One of our most popular models.</b>	
	<b>Floor Mounted</b>	<b>Mobile</b>
<b>Capacity</b>	1520kg	
<b>Spindle Height</b>	914mm	940mm
<b>Height</b>	1076mm	
<b>Width</b>	460mm	890mm
<b>Length</b>	920mm	1220mm
<b>Net Weight</b>	190kg	210kg

	<b>HM-ES-2000</b>	
	<b>Within our Heavy-Duty range. Suitable for many engines: Perkins 2206, 2506, CAT C9, C15, 3406, Cummins QSX15, K19, and many more</b>	
<b>Capacity</b>	3000kg	
<b>Spindle Height</b>	1000mm	
<b>Height</b>	1150mm	
<b>Width</b>	1372mm	
<b>Length</b>	1372mm	
<b>Weight</b>	350kg	

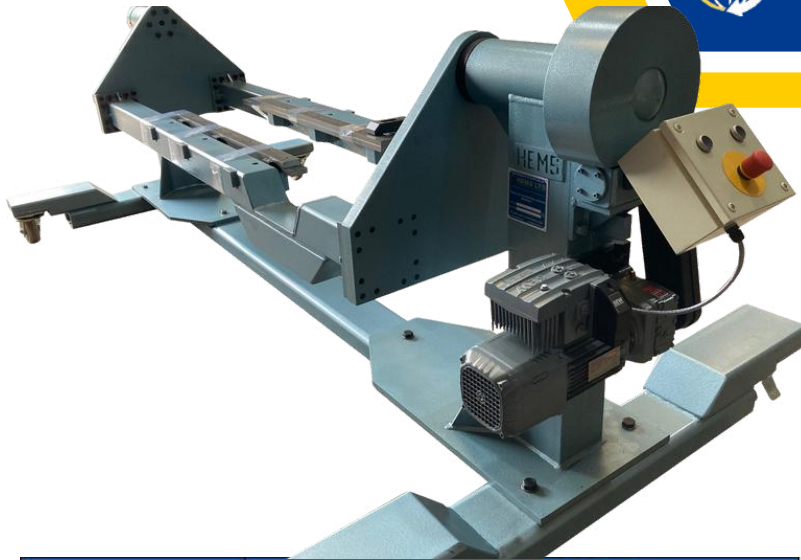
**Heavy Equipment Maintenance Solutions (HEMS) Ltd.**

sales@hemsltd.com    www.hemsltd.com    +44 2380 987 182



**HEMS LTD**  
HEAVY EQUIPMENT MAINTENANCE SOLUTIONS

**KEEP YOUR EARTHMOVING  
MACHINERY MOVING**



### HM-ES-6000

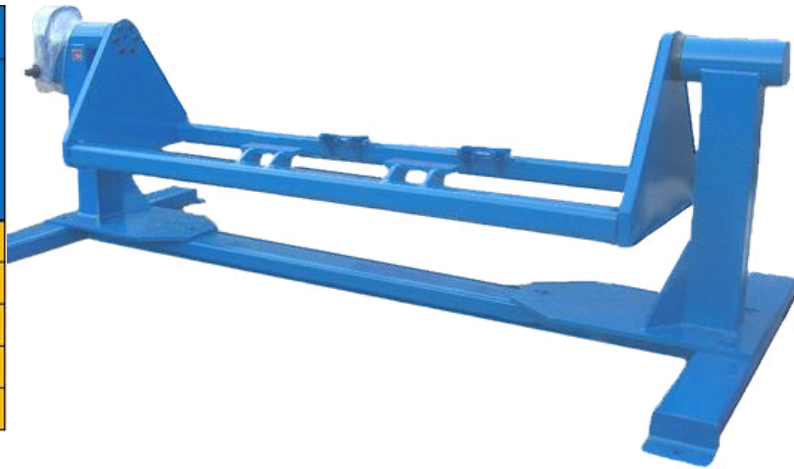
Suitable to handle many engines on the market e.g Cummins K38, K48, MTU 12V4000, CAT 3508, C27, C32, and many more.

Capacity	5000kg
Height	1200mm
Width	1600mm
Length	3500mm
Net Weight	1050kg

### HM-ES-7000

Has the option of a motor drive for larger applications e.g Perins 4006, 4008, CAT 3512, 3516, Cummins QSK60, QSK50, KV50, and many more.

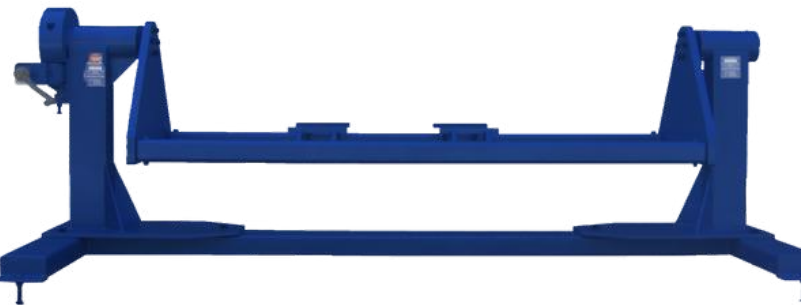
Capacity	7000kg
Height	1350mm
Width	1850mm
Length	4500mm
Net Weight	1825kg



### HM-ES-12000

We supply adaptor plates to suit most types of engines such as CAT 3520, Cummins VTA28, QSK95, KTA50, and many more

Capacity	12,000kg
Height	1200mm
Width	1845mm
Length	4392.5mm



### HM-EN-13-25

Our largest model. Suitable for the largest applications e.g Cummins QSK78, QSK95, QSK120, and more.

Capacity	20,000kg (floor mounted)
Height	1850mm
Width	2000mm
Length	5620mm
Net Weight	4500kg



**Heavy Equipment Maintenance Solutions (HEMS) Ltd.**

sales@hemsltd.com    www.hemsltd.com    +44 2380 987 182





**HEMS LTD**  
HEAVY EQUIPMENT MAINTENANCE SOLUTIONS

**KEEP YOUR EARTHMOVING  
MACHINERY MOVING**

# Lifting Jack



**Heavy Equipment Maintenance Solutions (HEMS) Ltd.**

[sales@hemsltd.com](mailto:sales@hemsltd.com) [www.hemsltd.com](http://www.hemsltd.com) +44 2380 987 182





**HEMS LTD**  
HEAVY EQUIPMENT MAINTENANCE SOLUTIONS

**KEEP YOUR EARTHMOVING  
MACHINERY MOVING**



**The combination of welded steel with heavy-duty chassis with 3 inch ground clearance makes the lifting jack ideal for use in a variety of environments.**

**Having only 3 control options (up, hold, down), it is easy to operate and simple to use whilst remaining one of the most effective jacks on the market.**

**Comes with the standard electrical pump. Option for pneumatic/air operated pump. Additional accessories available to increase stroke capacity, making it more flexible across machines and vehicles.**

**A compact, portable lifting solution that can vertically bare up to 100 tons!**



**Heavy Equipment Maintenance Solutions (HEMS) Ltd.**

[sales@hemsltd.com](mailto:sales@hemsltd.com) [www.hemsltd.com](http://www.hemsltd.com) +44 2380 987 182





# Vertical Press

Workshop hydraulic press with capacity ranging from **15-500tons** depending on the application.

The vertical press was designed for removal and fitment of bearings, sprockets, gears, straightening of shafts and general maintenance.

**Double acting hydraulic cylinder** with suitable single stage 2 hp hydraulic power pack unit; hand lever operated directional control valve. The press will be supplied with **"V" blocks** (2 Nos.) and **ram adaptor** (1 No.) and hand operated winch mechanism for day light adjustment as standard accessories.

Vertical H Frame Press							
Model No.	Description	Pressure	Hand Pump Stages	Pressure in Bar		Flow/Stroke	
				1st Stage	2nd Stage	1st Stage	2nd Stage
10-150	Workshop Press with Hand Pump	700	Two-Stage	30	550	2.8	49
15-150							
20-150							
25-150							
30-150							
50-150							
60-200							
75-200							
100-200							
150-300							
200-300							
300-300							
^^^	Workshop Press with PowerPack		Radial Pump Stage		Phase		Motor/ HP
			Single		Single/Three		2-5 HP



**SKID STEER MACHINES?**

**MATERIAL HANDLING?**



Heavy-duty solid

# TYRE PRESS



**OTR EARTHMOVING MACHINES?**

**Solid OTR Tyres only**

Ideal for any workshop looking to broaden their offering

1 press can handle all sizes

**100-300tons**

Suited for Workshops and Service Depots

In operation at Michelin Tyre Centres



	Tyre Press		
	HTP-100	HTP-200	HTP-300
Capacity	100T	200T	300T
Construction	Fabricated H Frame		
Cylinders	1		
Stroke	300mm	500mm	600mm
Day-light Gap	1000mm	1500mm	2000mm
Width	1700mm	2100mm	2650mm
Table Size	1500 x 1500mm		2200 x 2200 mm
Moving Plate	Ø600mm (spider plate with spiders)	Ø1000mm (spider plate with spiders)	Ø1000mm (double-thick)

**Heavy Equipment Maintenance Solutions (HEMS) Ltd.**

sales@hemsltd.com    www.hemsltd.com    +44 2380 987 182





**HEMS LTD**  
HEAVY EQUIPMENT MAINTENANCE SOLUTIONS

**KEEP YOUR EARTHMOVING  
MACHINERY MOVING**

# Tyre Press

Suited to busy workshops and tyre service depots.  
Our press is capable of handling all sized **solid** tyres  
from small skid-steers to larger industrial equipment.

Extra tooling sets are available as an optional  
accessory.

Great for industries such as: recycling, plant,  
earthmoving, OTR



	Tyre Press		
	HTP-100	HTP-200	HTP-300
Capacity	100T	200T	300T
Construction	Fabricated H Frame		
Cylinders	1		
Stroke	300mm	500mm	600mm
Day-light Gap	1000mm	1500mm	2000mm
Width	1700mm	2100mm	2650mm
Table Size	1500 x 1500mm		2200 x 2200 mm
Moving Plate	Ø600mm (spider plate with spiders)	Ø1000mm (spider plate with spiders)	Ø1000mm (double-thick)

**Heavy Equipment Maintenance Solutions (HEMS) Ltd.**

sales@hemsltd.com    www.hemsltd.com    +44 2380 987 182



# UNDERCARRIAGE REPAIR

**Maximise use of Undercarriage with HEMS latest specialised tooling.**

**Do you have many worn Tracks laying in the corner of your workshop?**

**Did you know you could get 50% more life out of your worn Tracks?**

Undercarriage of machines wear out over time due to the demands on the track link, rollers and idler in the often harsh and challenging environment.



Want to increase the lifespan and resilience of easily damaged undercarriage parts such as track links, rollers and idlers, etc...? This can be achieved by using HEMS's highly efficient undercarriage repair tools. Parts can be re-built with the appropriate re-building equipment that HEMS offers. This includes a track press, track winder, torque wrench, seal lubricator, and a sprocket puller.

Note: HEMS also offers Pin Removal Tools such as the Master Pin Pusher, Pin Puller, and Dual Action Press.

\*the pictures used are for demonstration purposes only\*



# TRACK PRESS

With the launch of its new stationary track press, HEMS expands its reputable line of machinery and equipment for tracked vehicle maintenance. The three HEMS models facilitate safe and efficient assembly and disassembly of chains with pitches up to 325mm.



The Stationary Track Press has been rigorously tested for performance and reliability in our production facilities, ensuring it can withstand high volumes and continuous workloads with ease.

Stationary Track Press				
Description	HEM-UC/200T	HEM-UC/300T	HEM-UC/400T	HEM-UC/500T
Capacity of Cylinders	100 Ton	150 Ton	200 Ton	250 Ton
Bore	180mm	220mm	260mm	290mm
RAM	140mm	180mm	220mm	240mm
Press Daylight	800mm		900mm	
Max Track Pitch	270mm	280mm	300mm	325mm
Effective Area	254.46 cm/sq	380.13 cm/sq	530.93 cm/sq	660.52 cm/sq
Working Pressure	400 bar	400 bar	380 bar	380 bar
Stroke	150mm			
Forward Speed	27.22 mm/sec	21.69 mm/sec	20.17 mm/sec	16.21 mm/sec
Pressing Speed	6.94 mm/sec	6.53 mm/sec	5.93 mm/sec	4.77 mm/sec
Voltage	380-440 V			



**HEMS LTD**  
HEAVY EQUIPMENT MAINTENANCE SOLUTIONS

**KEEP YOUR EARTHMOVING  
MACHINERY MOVING**

# Electric Torque Wrench

## Electric Torque Wrench with Electric Servo Motor and Driver Control System

	HEM-UC/T7500	HEM-UC/T8500
Max Torque	7,500 Nm	8,500 Nm
Electric Motor	4.5 Kw	5.5 Kw
Torque Operation	Electric / Joystick	
Torque Setting	Programmable	

**HEMS' Electric Torque Wrench with electric servo motor and driver control system is designed for the removal and tightening of shoe bolts of small, medium, and large sizes of Track Chains.**

**The wrench has two speeds, one for low speed and high torque for the initial removal or final tightening of the bolts. High speed and low torque for quick removal of the bolt or initial screwing of the bolt during tightening.**



**Heavy Equipment Maintenance Solutions (HEMS) Ltd.**

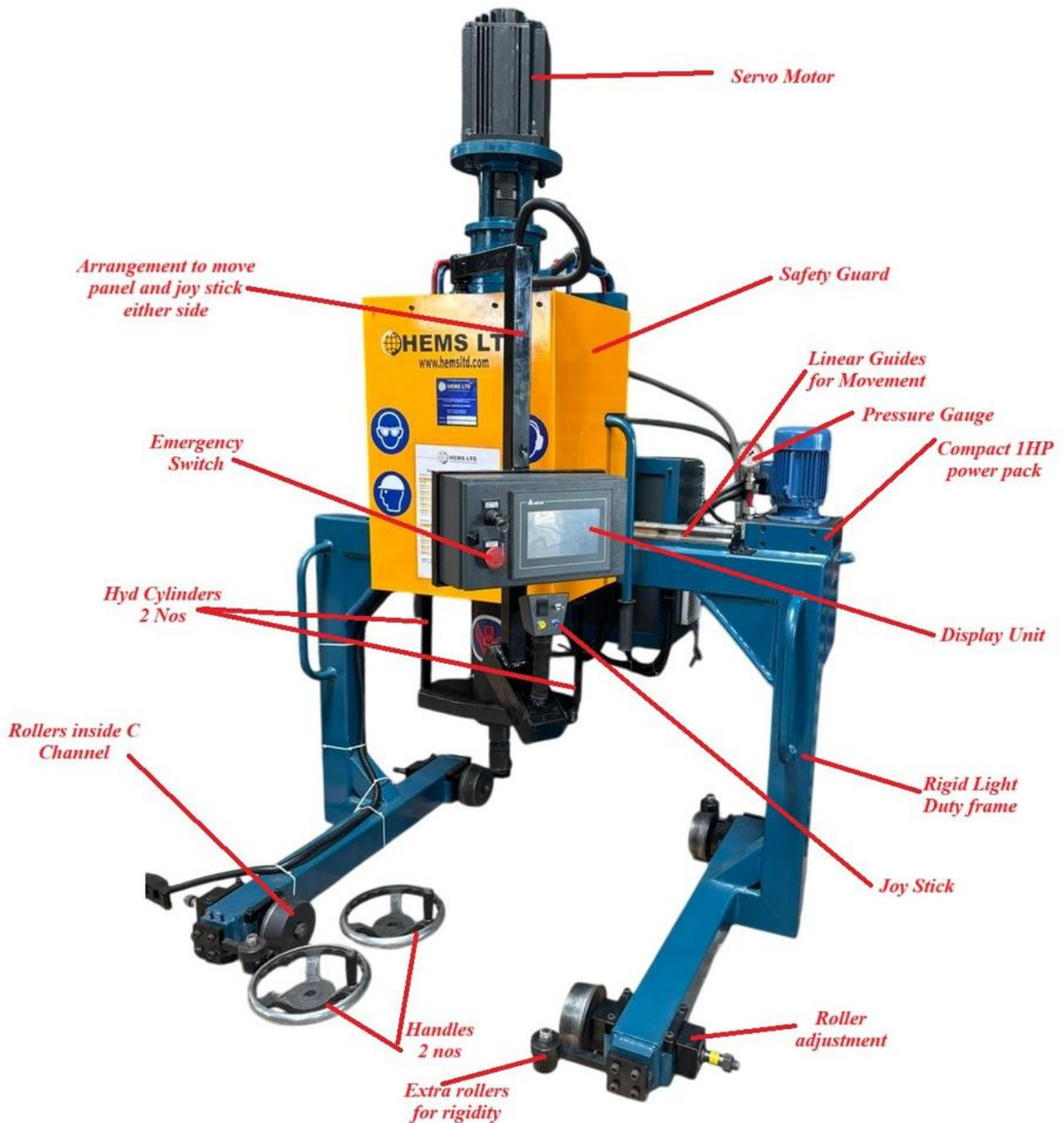
sales@hemsltd.com    www.hemsltd.com    +44 2380 987 182





**HEMS LTD**  
HEAVY EQUIPMENT MAINTENANCE SOLUTIONS

**KEEP YOUR EARTHMOVING  
MACHINERY MOVING**



**Heavy Equipment Maintenance Solutions (HEMS) Ltd.**

sales@hemsltd.com    www.hemsltd.com    +44 2380 987 182

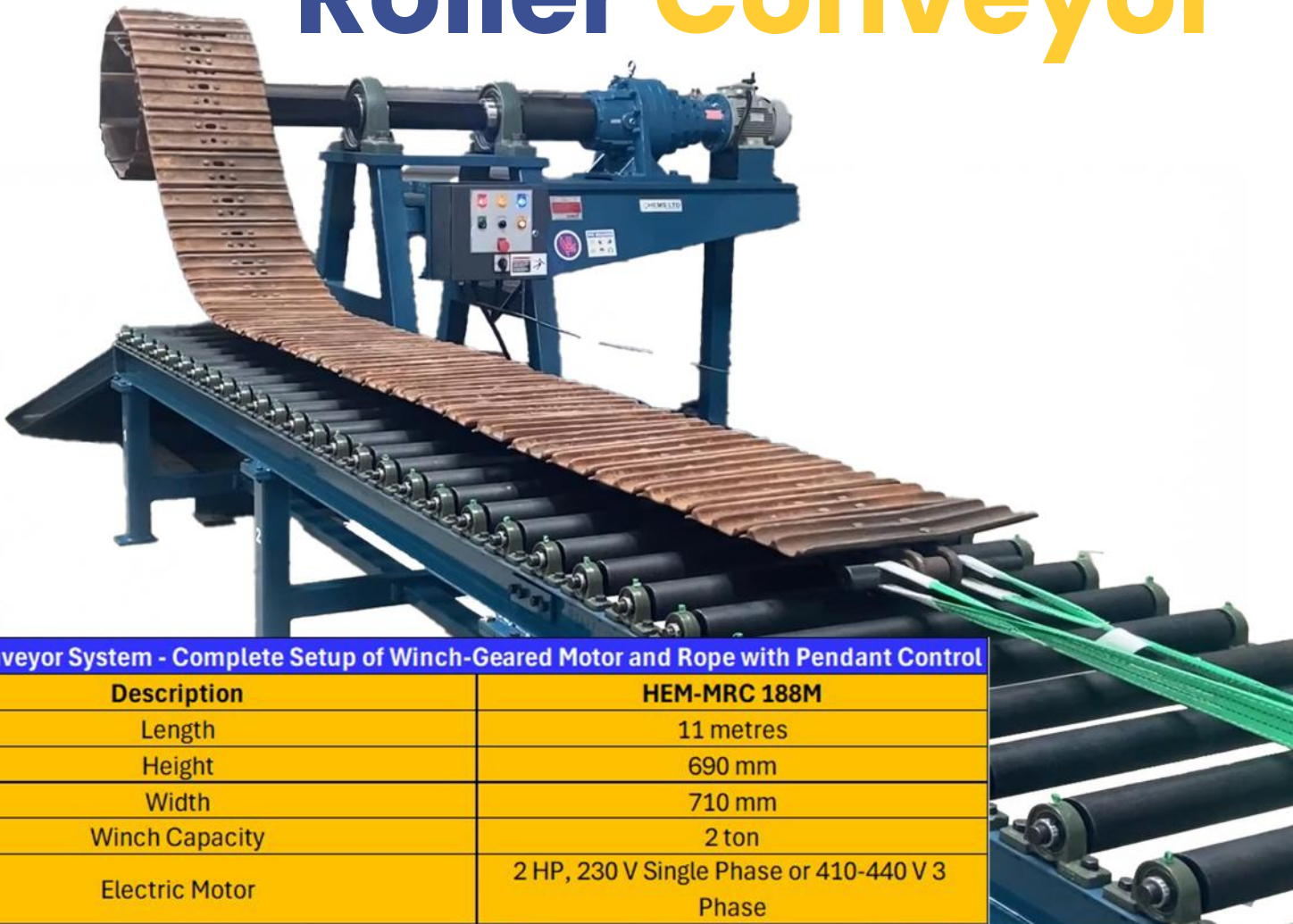
# Track Winder

The Track Winder is used for winding and unwinding tracks. It is generally placed in line with the Roller Conveyor for winding the track after assembly, or for spreading the track on the roller conveyor for disassembly of the track. It is extremely robust in design and suitable for large sized track chains.

Electric Track Winder	
Description	HEM TW/L
Max Torque	8,500 Nm
Spindle Speed	2 rpm
Electric Motor	5 HP, 3 phase
Torque Operation	Pendant
Voltage	380-440 V



# Roller Conveyor



Roller Conveyor System - Complete Setup of Winch-Geared Motor and Rope with Pendant Control

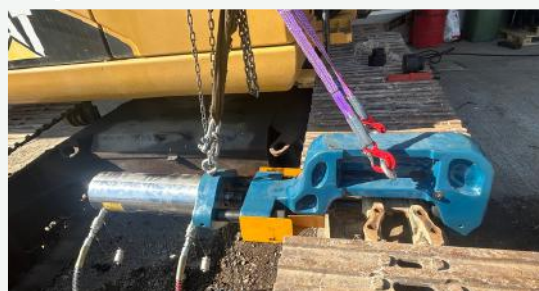
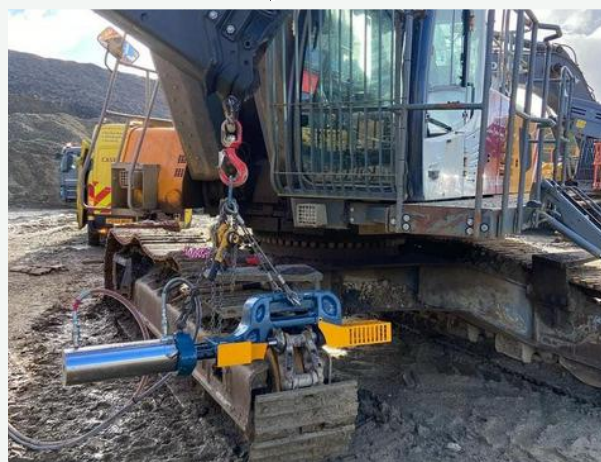
Description	HEM-MRC 188M
Length	11 metres
Height	690 mm
Width	710 mm
Winch Capacity	2 ton
Electric Motor	2 HP, 230 V Single Phase or 410-440 V 3 Phase





**HEMS LTD**  
HEAVY EQUIPMENT MAINTENANCE SOLUTIONS

**KEEP YOUR EARTHMOVING  
MACHINERY MOVING**



**Heavy Equipment Maintenance Solutions (HEMS) Ltd.**

[sales@hemsltd.com](mailto:sales@hemsltd.com) [www.hemsltd.com](http://www.hemsltd.com) +44 2380 987 182





**HEMS LTD**  
HEAVY EQUIPMENT MAINTENANCE SOLUTIONS

**KEEP YOUR EARTHMOVING  
MACHINERY MOVING**



**HEMS LTD**

**Don't Just Repair It, "HEMS IT!"**

**Heavy Equipment Maintenance Solutions (HEMS) Ltd.**

**[sales@hemsltd.com](mailto:sales@hemsltd.com)**

**[www.hemsltd.com](http://www.hemsltd.com)**

**+44 2380 987 182**

**Heavy Equipment Maintenance Solutions (HEMS) Ltd.**

**[sales@hemsltd.com](mailto:sales@hemsltd.com)   [www.hemsltd.com](http://www.hemsltd.com)   +44 2380 987 182**